

# Accord<sup>®</sup>

## Removal of SignBands

## Quick Reference Instructions

### Removal of SignBands

Failure to follow these instructions may result in damage to your Accord product! Accord products are designed with discrete clips that retain the SignBands, thus preventing unwanted tampering. When removal is necessary, the appropriate Removal Tool must be used in a specific manner.

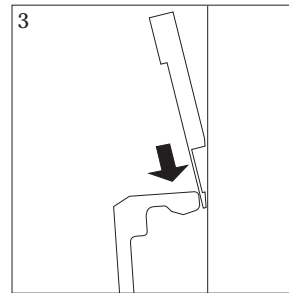
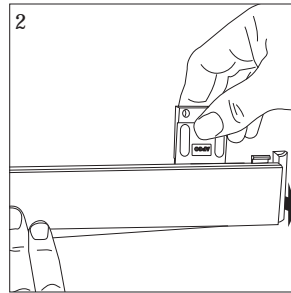
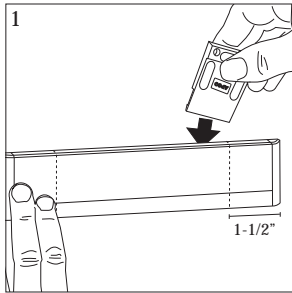
### Important Instructions

Refer to APCO Components Price List/Specification Guide for *complete* installation and maintenance information.



### Removing SignBands from Plastic End Clips

1. Insert Removal Tool behind SignBand, with logo facing outward, at least 1-1/2" from left or right side of SignBand, to avoid End Clip.
2. Apply light pressure to opposite end of band while pushing Removal Tool downward, behind SignBand.
3. This creates a "wedge" effect that releases the SignBand from the End Clip.

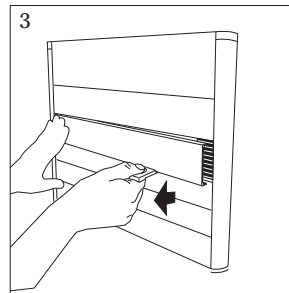
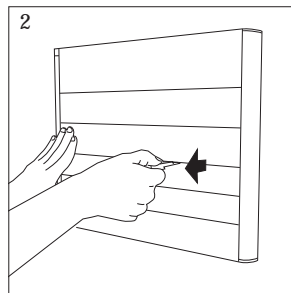
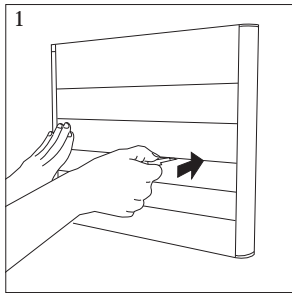


▶ Never begin by removing center SignBands when assembly incorporates multiple bands. Always begin by removing SignBands from top or bottom.



### Removing SignBands from Assemblies with Aluminum Side Tracks

1. Using the SignBand Removal Tool, push tool blade directly between two SignBands, making sure you select a location between the attachment clips (1-1/2" from outer edges of bands). *Do not begin by using Removal Tool on outer edge of top and bottom SignBands!*
2. Apply light pressure to one end of the SignBand requiring removal, while pulling straight out to release the opposite end. *Do not pry band!*
3. With one end disengaged, pull outward to release the other end.

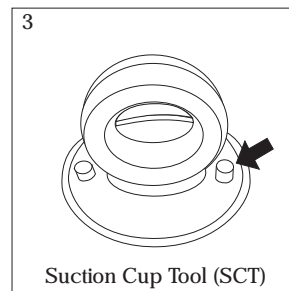
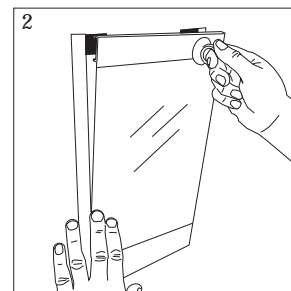
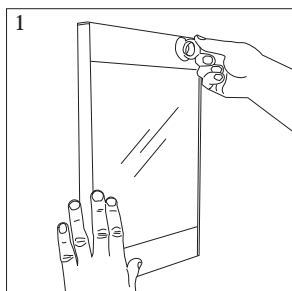


▶ Push tool straight in and pull straight out!



### Removing PosterHolder, Window Sign and custom inserts.

1. Using the Suction Cup Tool (SCT), affix the tool near an upper corner.
2. Once affixed, pull smartly outward, thus releasing the top of the insert component. (With One edge released, the entire face is easily disengaged.)
3. To release SCT, compress the two protruding "nibs" at base of the cup.



## Replacement of SignBands

Following these simple instructions will insure that your Accord product is not damaged by incorrectly reinserting SignBands. When reinserting existing SignBands, they must be properly aligned *prior* to snapping into position. When inserting new or replacement SignBands, always check to make sure the length is correct *prior* to snapping into place.

## Replacing SignBands with Plastic End Clips

*Replacing Top or Single SignBands* (Fig. 1)

1. Hang top edge of SignBands on Clips.
2. Make sure ends are centered between Clips.
3. Press to snap bottom edge into position.

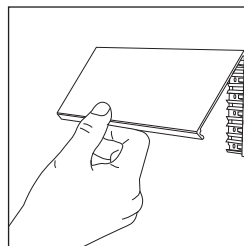


Fig.1

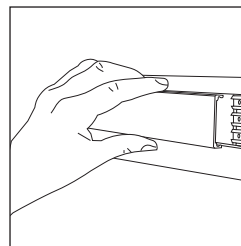


Fig.2

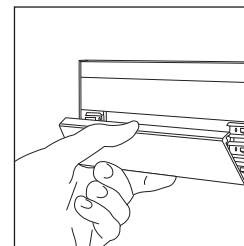


Fig.3

*Replacing Center SignBands* (Fig. 2)

1. Align SignBand over Clips.
2. Press directly into position.

*Replacing Bottom SignBands* (Fig. 3)

1. Align and place bottom edge of SignBand into position.
2. Make sure ends are centered between Clips.
3. Press to snap top edge into position.

## Replacing SignBands in assemblies with aluminum Side Tracks

*Replacing Top SignBands* (Fig. 1)

1. Hang top edge of SignBands on Clips.
2. Make sure ends are centered between Clips.
3. Press to snap bottom edge into position.

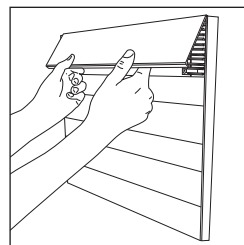


Fig.1

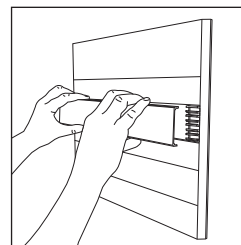


Fig.2

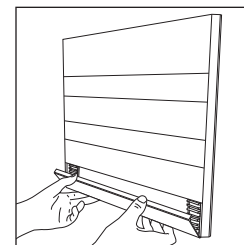


Fig.3

*Replacing Center SignBands* (Fig. 2)

1. Align SignBand over Clips.
2. Press directly into position.

*Replacing Bottom SignBands* (Fig. 3)

1. Place bottom edge of SignBand over Clips.
2. Make sure SignBand is centered between Clips.
3. Press to snap top edge of SignBand into position.

## Replacing PosterHolder, Window Signs and Custom Faces

1. Hang top edge of insert on Clips. (Fig. 1)
2. Make sure insert is centered between Clips.
3. Press to snap bottom edge into position.

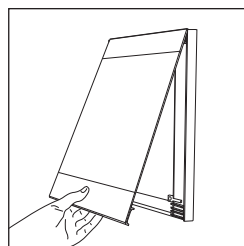


Fig.1