

# Accord<sup>®</sup> Express

## Modules with Plastic End Clips

## Quick Reference Instructions

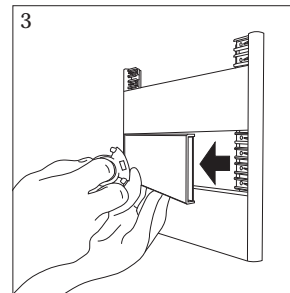
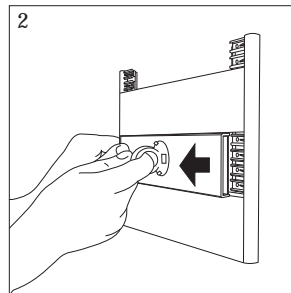
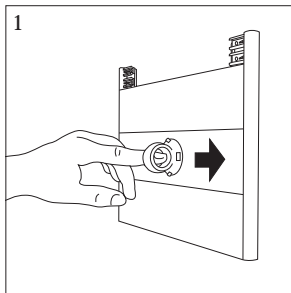
Removing and Replacing ColorBands & ClearBands from Signs Featuring Plastic End Clips  
Failure to follow these instructions may result in damage to your Accord product! Accord products are designed with discrete clips that retain the SignBands, thus preventing unwanted tampering. When removal is necessary, the appropriate APCO Removal Tool must be used in a specific manner.

**Important Instructions**  
Refer to full product guide for complete installation and maintenance information.



### Removing ColorBands & ClearBands Using the APCO Suction Cup Tool

1. Using the APCO Suction Cup Tool (SCT), affix the tool in center of Band. Apply light pressure to opposite end of SignBand and press center of Suction Cup to achieve greatest adhesion.
2. Using rubber handle, pull firmly outward.
3. For ClearBands, be sure to hold on to the back side of the Band when it releases from the Clips to prevent plastic Backer from falling.



### Replacing ColorBands & ClearBands

#### Replacing Top or Single Bands (Fig. 1)

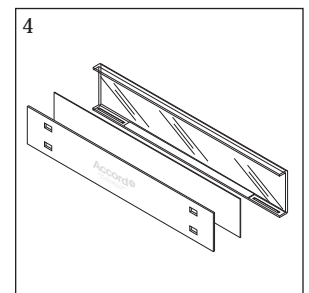
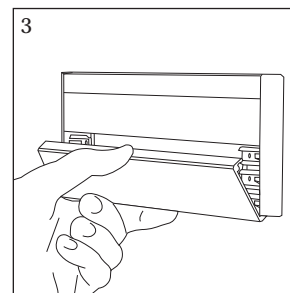
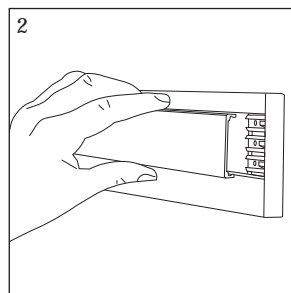
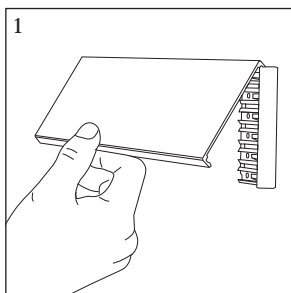
1. Hang top edge of Band on Clips.
2. Make sure ends are centered between Clips.
3. Press to snap bottom edge into position.

#### Replacing Center Bands (Fig. 2)

1. Align Band over Clips.
2. Press directly into position.

#### Replacing Bottom Bands (Fig. 3)

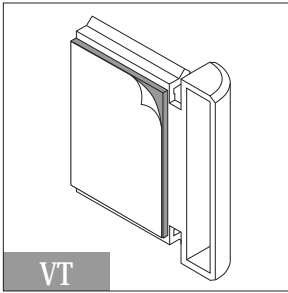
1. Align and place bottom edge of Band into position.
2. Make sure ends are centered between Clips.
3. Press to snap top edge into position.



#### Important Note

When reinserting ClearBands, be sure backer, inserts and ClearBand are aligned (left to right) prior to snapping into position (Fig. 4).

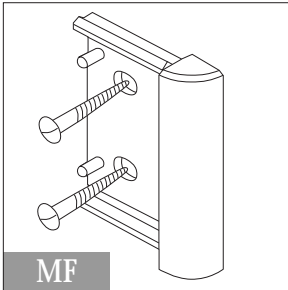
## Surface Mounted to Wall/Door/Fabric



## Vinyl Tape (VT)

1. Snap plastic End Clip into each end of ColorBand or ClearBand profile.
2. Mark mounting location with light pencil or removable tape, making sure sign is level.
3. Peel off double-sided tape backing and place firmly into position.

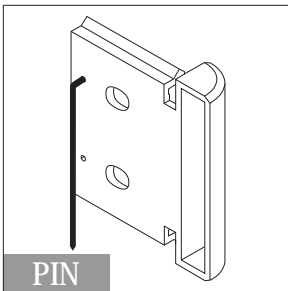
As with all adhesives, the user must insure the surface to which the sign holder is to be mounted is clean, dry, and free from any form of grease, oil or silicones. If the sign holder is to be affixed to a wood, the surface must have been sealed with a varnish or lacquer prior to attachment.



**Mechanical Fasteners (MF)** If you are attaching with either wood or metal screws into a solid material, it is recommended you use a #6 screw. When using this method, it is best to position End Clips with Vinyl Tape (VT) as this will facilitate proper positioning of End Clips while drilling pilot holes and inserting screws.

*For Large Quantity Installations, Follow VT steps 1 through 3 above, then the following:* When attaching to dry wall or hollow walls/surfaces, it is necessary to first make a template to locate mounting holes. Cut paper or thin cardboard precisely the same size as the overall sign module and punch hole locators as necessary.

*Note: Mechanical Fasteners are not included with your order, owing to varying wall conditions. A wide range of fasteners are suitable, but selecting the appropriate fastener is the responsibility of the installer.*



**PinLock (PIN)** For Accord sign modules of a suitable size/weight, the PinLock method may be used for attachment to fabric covered panels and walls. If you have requested this type of mounting, pins will be located on the backs of plastic End Clips.

It is necessary for pins to be in a vertical position in order to be mounted properly to fabric panels (see FIG. 1). The pins swing freely from side to side, but must always remain in the position shown.

**DO NOT PULL PINS OUTWARD**, as they may break off or become separated from End Clip (see FIG. 2).

When installing, place sign at a 20 degree angle and insert pins into fabric panel (see FIG. 3).

When removing, **DO NOT PULL OUT AT A SEVERE ANGLE**, as the pins may break off or the fabric may be damaged (see FIG. 4). For correct removal, simply lift holder straight up (see FIG. 5).



FIG. 1  
Correct



FIG. 2  
Incorrect

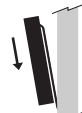


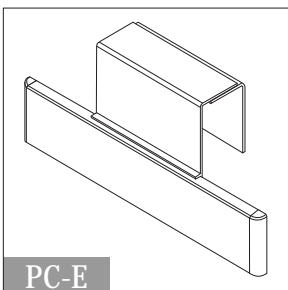
FIG. 3  
Correct



FIG. 4  
Incorrect



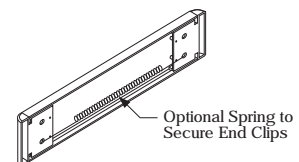
FIG. 5  
Correct



**Panel Clip - Extruded (SBPC)** The SBPC is a two-part, clear plastic hanger that is adjustable for office panels and screens from 1-1/8" (28mm) to 2-3/16" (55mm) depths. Part A engages the Accord Sign Band by removing the End Clip and sliding the extruded aluminum into position.

*Refer to separate Panel Clip instruction sheet*

An End Clip Spring may be used with certain modules hung with the Panel Clip. The spring is attached behind the SignBand profile to each End Clip, thus insuring the Clips remain snugly against the SignBand profile.



Optional Spring to Secure End Clips